

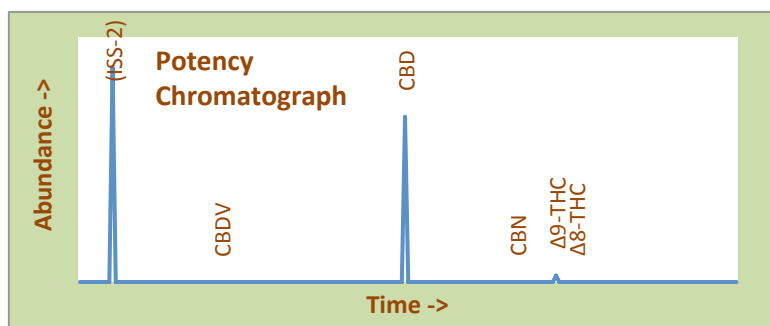


PEPPERMINT LIP BALM

SACRED WELLNESS

Certificate of Analysis

Assay Date:	March 3, 2020	BioTrack ID#:		Foreign Material Inspection
Material:	SALVE		not provided	Inspection not required
Method:	HPLC			
Internal ID:	SCW 001		Sample collected by client	
Moisture:	Not Performed			



Abundant Terpenes

1) α-Pinene	**	11) Terpinolene	**
2) Camphene	**	12) Linalool	**
3) β-Pinene	**	13) Isopulegol	**
4) Myrcene	**	14) Geraniol	**
5) 3-Carene	**	15) β-Caryophyllene	**
6) α-Terpinene	**	16) α-Humulene	**
7) d-Limonene	**	17) Nerolidol	**
8) p-Cymene	**	18) Guaiol	**
9) Ocimene	**	19) α-Bisabolol	**
10) γ-Terpinene	**		

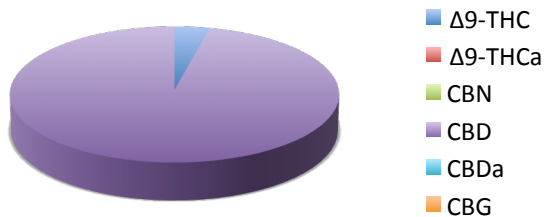
Terpene Total (not performed)

Cannabinoid*	mg/gram	Method	
Δ9-THC	0.11	hplc	Total THC = 0.011%
Δ9-THCa	<0.1	hplc	(Δ9 Activation = 100%)
CBN	<0.1	hplc	Total THC = <0.1 mg/unit
CBD	2.9	hplc	Total CBD = 0.3%
CBDa	<0.1	hplc	(CBD Activation = 100%)
CBG	np	GC	Total CBD = 14.5 mg/unit
Total	3.0		(Unit Size: 5 g)

Terpene Profile

(analysis not performed)

*Δ9-THC, Δ9-THCa and Total CBD are reported to BioTrack. 'np' = test not performed



TerpType®: (profile not performed)

Residual Solvents (ppm), bold-red if failed*

(residuals test not performed)

Microbial Screen (cfu/gram) Observed Rate

- Total aerobic plate count:	<1000	Passes
- Total yeast and mold count:	<10	Passes
- Bile-tolerant gram negative:	<10	Passes
- E. Coli:	nd	Passes
- Salmonella spp.:	nd	Passes
- Mycotoxins (B1, B2, G1, G2, OA):	<1 ppb	Passes

Sample Passes Microbial Screen

* Residual limits can be found at: <http://riograndeanalytics.net/Residuals.html>. No limit for ethanol.

Approved on March 06, 2020
Results are non-transferable
and valid for 30 days.

Barry Dungan
Barry Dungan - lab manager