

Photograph of Sample

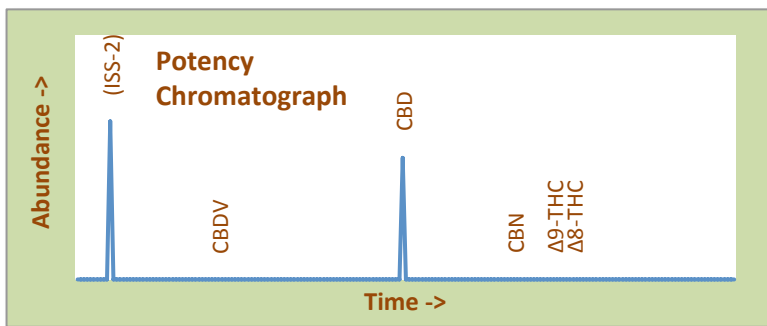


DARK TRUFFLE CHOCOLATE SACRED WELLNESS

Certificate of Analysis

| | | | |
|---------------------|---------------|----------------------|----------------------------|
| Assay Date: | March 3, 2020 | BioTrack ID#: | |
| Material: | CHOCOLATE | | not provided |
| Method: | HPLC | | |
| Internal ID: | SCW 026 | | Sample collected by client |
| Moisture: | Not Performed | | |

Foreign Material Inspection
Inspection not required



Abundant Terpenes

| | | | |
|-----------------|----|---------------------|----|
| 1) a-Pinene | ** | 11) Terpinolene | ** |
| 2) Camphene | ** | 12) Linalool | ** |
| 3) b-Pinene | ** | 13) Isopulegol | ** |
| 4) Myrcene | ** | 14) Geraniol | ** |
| 5) 3-Carene | ** | 15) b-Caryophyllene | ** |
| 6) a-Terpinene | ** | 16) a-Humulene | ** |
| 7) d-Limonene | ** | 17) Nerolidol | ** |
| 8) p-Cymene | ** | 18) Guaiol | ** |
| 9) Ocimene | ** | 19) a-Bisabolol | ** |
| 10) g-Terpinene | ** | | |

Terpene Total (not performed)

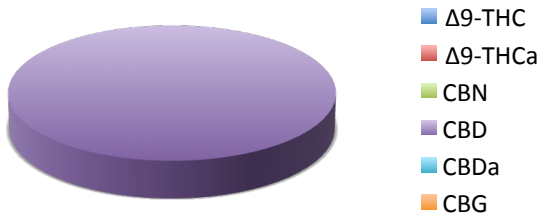
| Cannabinoid* | mg/gram | Method | |
|--------------|---------|--------|------------------------------------|
| Δ9-THC | <0.1 | HPLC | Total THC = <0.01% |
| Δ9-THCa | <0.1 | HPLC | (Δ9 Activation = n/a) |
| CBN | 0.00 | HPLC | Total THC = <0.1 mg/unit |
| CBD | 1.4 | HPLC | Total CBD = 0.14% |
| CBDa | <0.1 | HPLC | (CBD Activation = 100%) |
| CBG | np | GC | Total CBD = 150 mg/unit |
| Total | 1.4 | | (Unit Size: 105 g) |

Terpene Profile

(analysis not performed)

TerpType®: (profile not performed)

*Δ9-THC, Δ9-THCa and Total CBD are reported to BioTrack. 'np' = test not performed



Residual Solvents (ppm), bold-red if failed*

(residuals test not performed)

| Microbial Screen | Observed Rate (cfu/gram) | |
|------------------------------------|--------------------------|--------|
| - Total aerobic plate count: | <1000 | Passes |
| - Total yeast and mold count: | <10 | Passes |
| - Bile-tolerant gram negative: | <10 | Passes |
| - E. Coli: | nd | Passes |
| - Salmonella spp.: | nd | Passes |
| - Mycotoxins (B1, B2, G1, G2, OA): | <1 ppb | Passes |

Sample Passes Microbial Screen

Approved on March 06, 2020
Results are non-transferable
and valid for 30 days.

Barry Dungan
Rio Grande Analytics
Las Cruces, NM
Barry Dungan - lab manager

* Residual limits can be found at: <http://riograndeanalytics.net/Residuals.html>. No limit for ethanol.